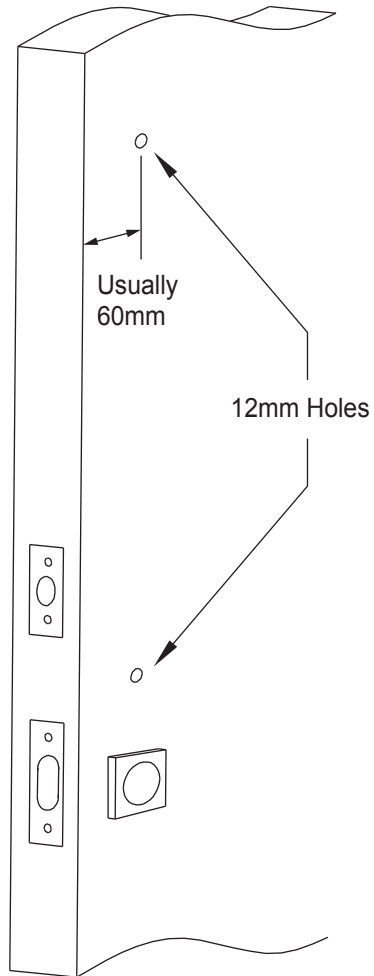


# Pull Handle Installation Instructions

## Step 1.

- Locate the required position of the pull handle ensuring it avoids interfering with all other hardware.
- Mark two hole centrelines at the required spacing for the model being installed (Vertically - 300mm, 450mm, 600mm). The usual distance across from the door edge is 60mm.
- Transfer the two hole centrelines onto the opposite face of the door. (or use a small pilot drill to drill through to the opposite face).
- Keep the drill straight and level when drilling the holes.
- Drill two 12mm holes on one face of the door and ensure the drill does not break through to the opposite face (breaking through can cause large splintering of the door).
- Drill through to the two holes from the opposite face of the door.



*Gainsborough*  
ENTER WITH STYLE™

Gainsborough Hardware Industries Limited,  
Melbourne, Australia. A.B.N. 25 004 792 269  
[www.gainsboroughhardware.com.au](http://www.gainsboroughhardware.com.au)

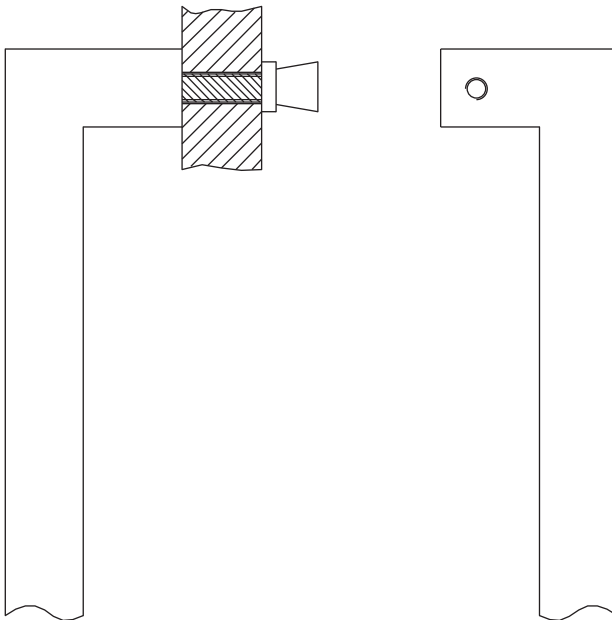
RES1DOC06AM1  
AUG '17



# Pull Handle Installation Instructions

## Step 2.

- Select the correct length screws to suit the door thickness.
- Fix the exterior pull handle with plastic packers onto the door with the two screws.
- Install the interior pull handle over the heads of the two screws and fix in place by installing and tightening the grub screws evenly.



*Gainsborough*  
ENTER WITH STYLE™

Gainsborough Hardware Industries Limited,  
Melbourne, Australia. A.B.N. 25 004 792 269  
[www.gainsboroughhardware.com.au](http://www.gainsboroughhardware.com.au)

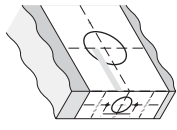
RES1DOC06AM1  
AUG '17



# Installation Instructions for Deadbolt

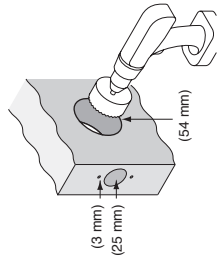
## Step 1.

- Mark the Door as shown and use the template as guide.



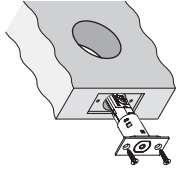
## Step 2.

- Drill the holes as shown.



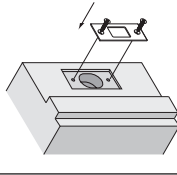
## Step 3.

- Prepare rebate
- Install the latch and screw to tighten.



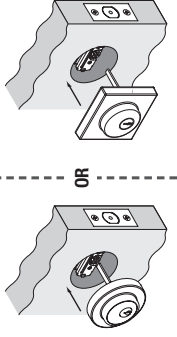
## Step 4.

- Prepare rebate
- Install the strike and screw to tighten.



## Step 5.

- Install the outside cylinder as shown.
- The drive tail is positioned horizontally.

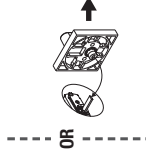


**NOTE:** Carefully follow these instructions when installing. Screws to be tightened to a recommended 2.5Nm torque.

## Step 6.

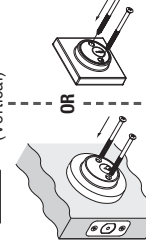
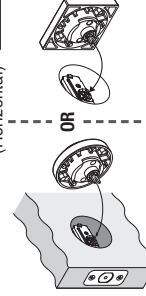
### Install Thumbturn

- For Single Cylinder functions, please install the thumbturn as per diagram.



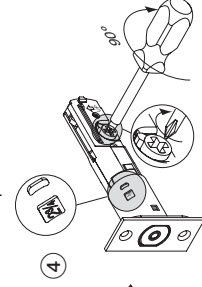
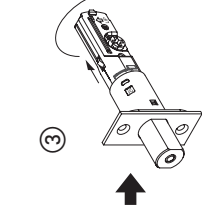
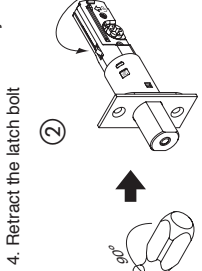
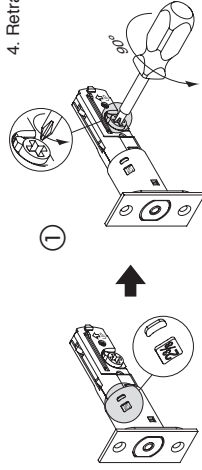
### Install Cylinder

- For Double Cylinder functions, install the exterior and internal parts as shown in the diagram.



## Step 7.

- Set the latch backset



Note: The latch is supplied set at 60mm (2-3/8"), to set the latch at 70mm (2-3/4"),

1. Extend the latch bolt
2. Rotate the rear of the latch body
3. Pull the rear of the latch body to set at 70mm back set and then rotate to lock into place.
4. Retract the latch bolt



Mark centre-line of latch hole

Mark centre-line of latch hole

FOLD HERE

Fit here on door edge

Fit here on door edge

BACKSET 60mm (2 3/8")

BACKSET 70mm (2 3/4")

54mm hole

**Gainsborough**  
ENTER WITH STYLE™

Installation template for deadbolt

Gainsborough Hardware Industries Limited,  
Melbourne, Australia. A.B.N. 25 004 792 269  
[www.gainsboroughhardware.com.au](http://www.gainsboroughhardware.com.au)

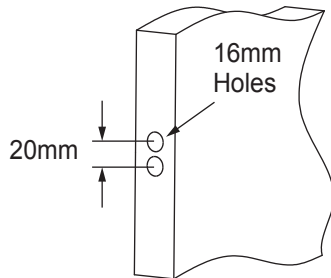
DGA-A00E12-00  
JUL '19



# Roller Latch Installation Instructions

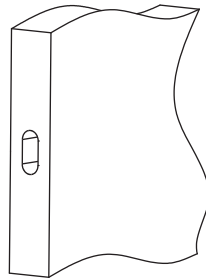
## Step 1.

- Locate the correct position of the roller latch ensuring it avoids interfering with all other hardware.
- Mark two hole centrelines at 20mm apart.
- Drill 2 x 16mm holes to 55mm deep.
- Keep the drill straight and level when drilling the holes.



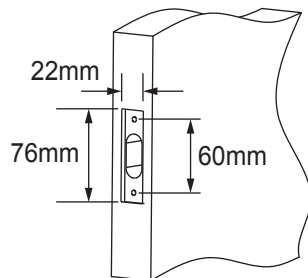
## Step 2.

- Chisel out the timber between the two holes to make a 55mm deep slot.



## Step 3.

- Mark out the 76 x 22 x 4mm deep face plate details (or use the latch face plate as a template).
- Chisel out the timber to 4mm deep to suit the roller latch face plates.
- Mark out two screw holes at 60mm centres and predrill with a 3.0mm drill.



*Gainsborough*  
ENTER WITH STYLE™

Gainsborough Hardware Industries Limited,  
Melbourne, Australia. A.B.N. 25 004 792 269  
[www.gainsboroughhardware.com.au](http://www.gainsboroughhardware.com.au)

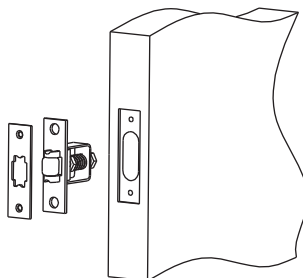
RES1DOC05AM1  
AUG '17



# Roller Latch Installation Instructions

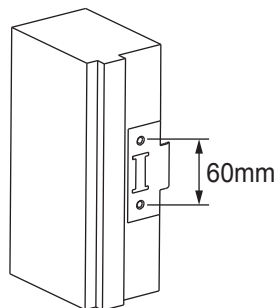
## Step 4.

- Install the roller latch with the face plate and fix it in place with the 2 screws using a hand screwdriver.



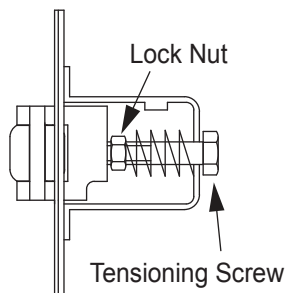
## Step 5.

- Close the door partially and determine the correct location for the strike plate on the door jamb.
- Use the strike plate as a template to mark out the position on the door jamb.
- Chisel out the timber to suit.
- Mark out two screw holes at 60mm centres and predrill with a 3.0mm drill.
- Install the strike plate and optional plastic strike box and fix it in place with the 2 screws using a hand screwdriver.



## Step 6.

- Open and close the door to test the tension of the rollerlatch.
- To adjust the tension, remove the roller latch, loosen the lock nut and adjust the tensioning screw in or out to suit, then tighten the lock nut.
- Re-install the roller latch and check the tension.



*Gainsborough*  
ENTER WITH STYLE™

Gainsborough Hardware Industries Limited,  
Melbourne, Australia. A.B.N. 25 004 792 269  
[www.gainsboroughhardware.com.au](http://www.gainsboroughhardware.com.au)

RES1DOC05AM1  
AUG '17

